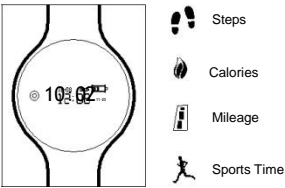


Operation

For optimal performance, wear the smart wristband on your non-master hand. For example, if you are a right-hander, wear the smart wristband on your left hand. To active the display, simply raise up your hand and hold to look at the screen. The data will then be displayed one by one.

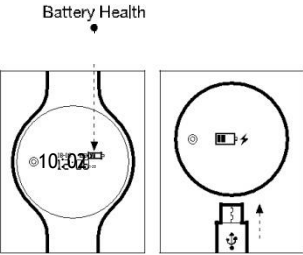
Alternatively, tap on the center far left of the screen to activate the time display and tap it again to show the following data.



Charging The Wristband

The battery indicator is displayed on the home screen of the smart wristband. Charge the smart wristband when there is 1 bar left on the battery indicator. The whole charging process should take less than 2 hours. A fully charged smart wristband should last for approximately 7-10 days.

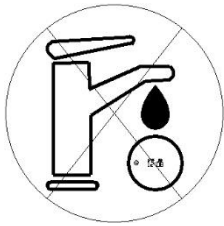
Plug in the mini USB into port located at bottom of the base unit as shown.



Caring For The Wristband

The smart wristband is manufactured with materials of the highest quality and will last you a long time if used appropriately. To clean the smart wristband, remove the base unit from the strap and wash the strap under running water. Clear the base unit separately using a damp piece of cloth.

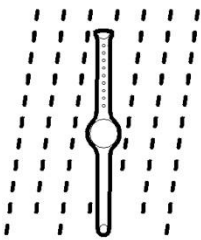
Do not place the base unit under running water without the strap attached.



Water Resistant

When the base unit is securely attached to the strap (Refer to the section on 'Assemble The Smart Wristband'), the smart wristband is water resistant\* and you can wash your hands while wearing it.

\* Water resistant - not waterproof. Not for use while swimming, diving or engaging in other underwater activities. Avoid prolonged exposure to water.



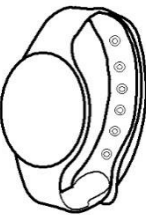
Technical Specifications

Battery Capacity: 40mAh  
Battery Life: Approx. 7 days of regular use  
Weight: 9g base unit  
Operating Temperatures: -20°C – 45°C  
OS Requirements: Android 4.3, iOS 8.3 or above  
Connection Type: Bluetooth version 4.0 or above  
  
\*All specifications are subject to actual performance.

FAQ

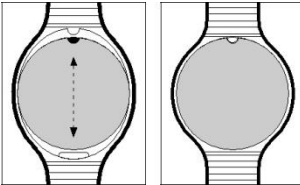
Q.Why the smart wristband's screen can not light up ?  
A:Please check if the battery have been fully depleted. Refer to Section 03.  
Q.Why App 'iFit' can not find the smart wristband's signal ?  
A:01.Please make sure that the smart wristband switch on.  
02.Please turn on Bluetooth on phone again. Refer to Section 04.1  
Q.Failed to sync the data to the App for the same smart wristband.  
  
A:Pull down to refresh, or quit the app and tap it on again. Refer to Section 04.2  
Q.How to correct or adjust time on the wristband ?  
A:Time to be corrected automatically when the wristband pair with your phone successfully.  
Q.Why the data can not sync to App when use a new wristband ?  
A:Please tap on "Reset all the configuration information" in the App Setting to clear the data of the previous wristband.

Smart Wristband  
FITNESS TRACKER  
User Guide



01> Assemble The Wristband

The smart wristband comes with a base unit and a strap. For optimal comfort and water resistance, ensure that the base unit is securely attached to the strap.



02> Install The App

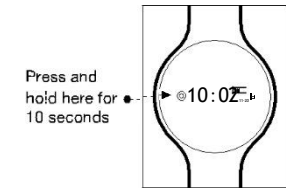
"iFit" app can be installed from the App Store or Google Play.



03> Switch The Wristband On

To conserve battery, the smart wristband is set to hibernation mode during manufacturing. For first time usage, press and hold the indicator on the screen for 10 seconds to activate the device. The screen will light up.

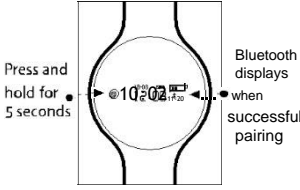
If nothing happens after 10 seconds, the battery could have been fully depleted and you should charge the smart wristband before trying again. Refer to the section on 'Charging The Smart Wristband'.



04.1> Join and Pair

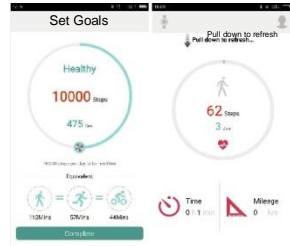
For first time paring, place the smart wristband next to your mobile phone and keep it within 30cm and turn on the Bluetooth on your mobile phone and tap on the app 'iFit'.

On the app page 'Bind wristband', to press and hold the indicator for 5s to pair automatically. Alternatively, manually select the matching signal to pair with the wristband.



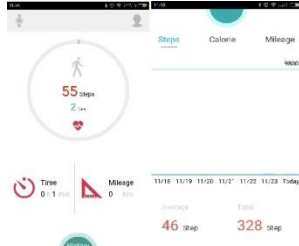
04.2> Join and Sync

To participate sports challenge, fill in your personal particulars and set the sports goal. The data will be captured by your smart wristband and it can automatically sync to your smart wristband every time you tap on the app 'iFit' when the smart wristband connected. It also can be pulled down to refresh on the app 'iFit'.



04.3> Join and Record

The smart wristband can store steps, Cal and Mileage data up to a maximum of 7 days. Simply tap on 'History' to find them. To ensure all the data are recorded, sync at least once every 7 days.



Limited Product Warranty

The Smart Wristband (The 'Product') is guaranteed against manufacturer's defects for a period of 1 year from the date of purchase. This warranty only covers defects in materials and workmanship. If the smart wristband is found to be faulty due to defects in materials and workmanship, the authorized service provider will replace it with a new smart wristband.

The warranty does not cover normal wear and tear, excessive abuse or misuse and damage arising from failure to follow instructions relating to the Product's use. This Limited Warranty does not cover the services provided by any 3rd party service provider to owners of the Product. All warranty claims must be accompanied by a sales receipt and this warranty booklet.

Warranty Code: 2015001120  
Model # MK-SW01